

CONTROLS

CONSTRUCTION
MATERIALS
TESTING

VICAMATIC³

Automatic Setting Time Tester
for Cement, Mortar and Gypsum

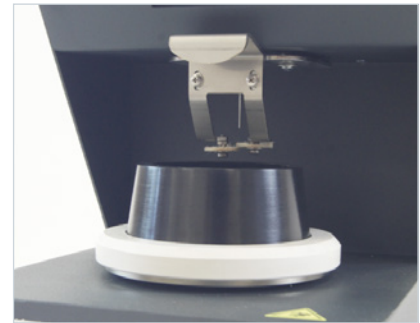


www.controls-group.com

CONTROLS have long been manufacturing automatic setting time testers for cement and mortar. A fourth generation is now available, featuring a large color 5.1" touch screen display.

As with previous models, the test procedure remains unchanged: a needle (or a probe) drops freely into a cement sample at regular intervals and in fixed positions, measuring penetration depth with a 0.1 mm resolution sensor.

As the sample hardens, the depth of penetration decreases. When reaching the predefined thresholds established by Standards, it is time to measure and record the initial and final setting times.



Detail of the needle cleaning device (included).

Superior Functionality and Value



Easy-to-use interface and software



Large accessibility to the test space



High productivity



Expandability over time



A typical plot of a test result obtained with the integrated printer model 65-L2700/E13 including setting time diagram and readings.

Intuitive Interface

The adoption of the latest electronics technologies, including a wide 5.1" color touch screen display, brings great accuracy, reliability and the possibility to create a network with up to 32 independent units (including previous VICAMATIC 2 models) all controlled by a single PC through LAN hubs.

The size and resolution of the touch-screen display provide test menus with advanced functions. Easy to navigate, it uses large icons and graphic symbols to easily identify each step of the testing process.



Communication ports are positioned on the rear side. LAN port is suitable for connecting to a PC or to LAN-hub, that creates a network with up to 32 independent units controlled by a single PC. USB port is used for data download to PC and firmware upgrade.



Ergonomic design delivers great functionality and large accessibility to test area.

VICAMATIC³

Automatic setting time tester for cement, mortar and gypsum

Standards

EN 196-3 | EN 480-2
EN 13279-2 | ASTM C191 | ASTM C187
ASTM C141 | ASTM C451 | ASTM C807
AASHTO T131

Fully automatic setting time tester with double control mode (local and remote by PC), programmable test procedure, user friendly interface, integrated graphic printer.

Advanced electronics technologies providing superior performance, flexibility and ease of use.

Easy set-up and storage of user-defined test profiles for a speedy start of the test.

Large and accessible testing space.

Automatic determination of initial and final setting time.



Integrated graphic printer

showing both results in both numerical and setting time plot formats.

Double interface:

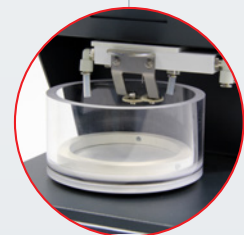
Choice of a local mode, with large size 5.1" high-resolution 800 x 480 pixels, touch screen color display, or remote mode, with PC.

Complete with needle cleaning device.



Vicamatic 3 comes complete with our data processing PC software, VICASOFT-BASIC.

All units can then be remotely controlled and tests done simultaneously, maximising your laboratory's productivity.



Practical in-water testing accessory (optional).

Intuitive Smart Software

PC Software VICASOFT-PREMIUM

VICASOFT-PREMIUM software for PC provides connection of up to 32 VICAMATIC-2 and VICAMATIC-3 units including remote control of each unit, data acquisition, processing, filing, and printout of test reports.

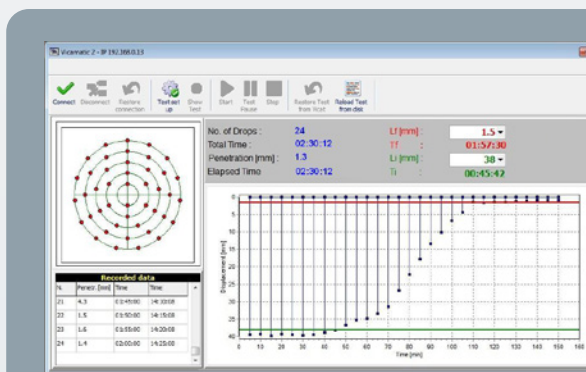
Communication is achieved via LAN port (each VICAMATIC unit is supplied complete with LAN cable). The connection of one unit is direct via the PC LAN-port, for more units (up to 32) one or more LAN hubs are required with total number of ports equal (or greater) than the number of units included in the network. LAN hubs are not included.



Create a network with up to

32 x

independent units!

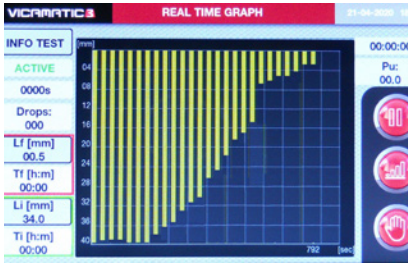


Typical setting diagram shown by the VICASOFT-PREMIUM PC software

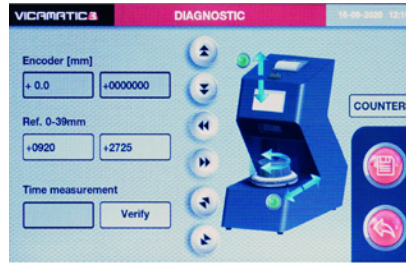


VICASOFT-PREMIUM, creation of a user-defined test profile, easily retrievable for future tests

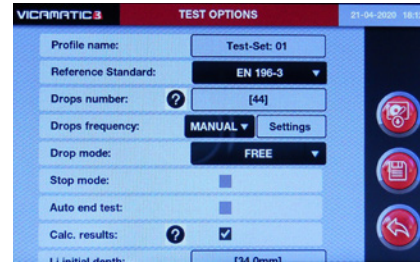
Display Screenshot



Setting time plot shown in real time on VICAMATIC-3 display

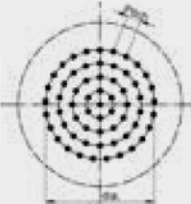
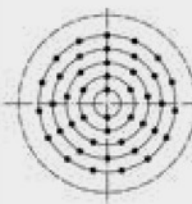
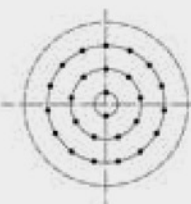
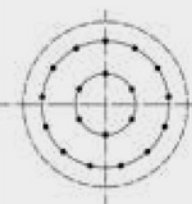
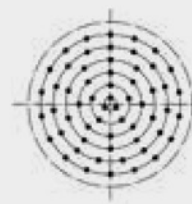


Calibration menu



Typical screenshot of test profile set-up

Test Paths

Standards	ASTM C191	EN 196	EN 480-2	EN 13279-2	General purpose
Pitch (mm)	6.8	10	10	12	min 2 mm
Diameters (mm)	0 - 10 - 20 - 30 - 40	10 - 20 - 30 - 40 - 50	10 - 30 - 50	0 - 24 - 50	0 ≤ dia ≤ 60 (max 10 diameters)
Points per dia.	1 - 6 - 12 - 18 - 25	2 - 6 - 9 - 12 - 15	2 - 9 - 15	1 - 6 - 13	depending on diameter size
					

Technical Specifications

5.1", 800 x 480 pixel, 16 M colors, icon-driven touchscreen graphic display, showing data and plots.

Can incorporate an integrated graphic printer showing test results and setting time plots.

LAN port for direct connection to PC of a single unit or connection to a LAN hub for creating a network with up to 32 independent units, all controlled by a single PC. 1 LAN cable is included.

Wide range of accessories including EN and ASTM parts, in-water testing kit, needle cleaning device, integrated printer, probes for testing consistency and gypsum.

USB port for test data download to PC and easy firmware upgrade.

Automatic calculation of initial and final setting time at programmable penetration depth limits.

Unlimited storage capacity for test data on internal 16 GB SD card.

Large test space with easy accessibility.

Conforms to both EN and ASTM test procedures.

Power: 50 W

Test procedures can be customized and stored to match user-defined requirements.

Dimensions: 200 x 400 x 410 mm (L x W x H)

Ordering Information

63-L2701/E

VICAMATIC-3, automatic electronic apparatus for setting time test on cement/mortar/gypsum. Complete with EN 196-3 accessories: initial setting time needle 1.13 mm dia., mold and PC software VICASOFT-BASIC.

110-230V, 50-60Hz, 1ph.

63-L2701/F

VICAMATIC-3, automatic electronic apparatus for setting time test on cement/mortar/gypsum. Complete with ASTM C191 accessories: initial setting time needle 1.00 mm dia., mold and PC software VICASOFT-BASIC.

110-230V, 50-60Hz, 1ph.

63-L2701

VICAMATIC-3, automatic electronic apparatus for setting time test on cement/mortar/gypsum complete with PC software VICASOFT-BASIC. Supplied without accessories and centering ring.

110-230V, 50-60Hz, 1ph.

Spare parts

63-L2700/1

Centering ring for EN mold.

63-L2700/2

Centering ring for ASTM mold.

63-L2700/E20

1,13 mm dia. needle for initial setting time test to EN.

63-L2700/E21

1 mm dia. needle for setting time test to ASTM.

63-L0027/E22

Plastic mould to EN.

63-L0027/E23

Plastic mould to ASTM.

63-L2700/E24

Glass base plate.

63-L2700/E25

Spare base plate for in-water testing kit.



EN and ASTM moulds and needles: 63-L2700/E20, 63-L2700/E21



63-L2700/E22 (on the left)
63-L2700/E23 (on the right)



63-L2700/E24 (on the left)
63-L2700/E25 (on the right)

Accessories

General Accessories

82-SW/VS

VICASOFT-PREMIUM PC software for remote control.

63-L2700/E11

LAN hub for PC connection of up to 7 units or up to 6 units in case of multi-hub network. LAN cable from hub to PC is included. Each unit is supplied complete with LAN cable.

63-L2700/PR

Upgrading of a VICAMATIC unit for incorporating a graphic printer into the head. Test settings and results are plotted both as numerical and graphical format including penetration depth/time diagram. The upgrading shall be factory installed.

Accessories to ASTM Standards

63-L2700/F15

Cylindrical probe and additional weight for consistency test to ASTM C807 and ASTM C187.

63-L2700/F15

Cylindrical probe and additional weight for consistency test to ASTM C807.



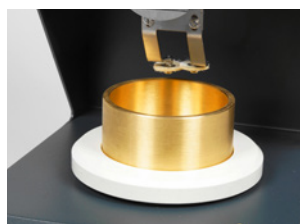
2 mm needle to ASTM C807 (63-L2700/F21) on the left; consistency probe and additional weight to ASTM C807 (63-L2700/F15) on the right

63-L2700/F21

2 mm dia. needle to ASTM C807.

63-L2700/F23

Brass cylindrical mould to ASTM C807.



Brass mould to ASTM C807 (63-L2700/F23)

Accessories to EN Standards

63-L2700/E10

Accessory for needle cleaning and in-water testing.

63-L2700/E9

Water thermostatic unit for up to 2 units. 230 V, 50-60 Hz, 1 ph.



63-L2700/E9

63-L2700/E9Z

Water thermostatic unit for up to 2 units. 110 V, 60 Hz, 1 ph.



EN and ASTM mould and needle: 63-L2700/E14

63-L2700/E14

Needle for final setting test to EN 196-3.

63-L2700/E15

Cylindrical probe for consistency test to EN 196-3 and ASTM C187.



63-L2700/E15

63-L2700/E16

Additional weight 700 g to EN 480-2.



63-L2700/E16

63-L2700/E18

Conical penetration probe 8 mm dia x 50 mm complete with 100g calibrated weight for gypsum testing to EN 13279.



63-L2700/E18

CONTROLS Customer Care

As one of the longest established manufacturing companies in the world of Construction Materials Testing solutions, we are dedicated to supplying high quality, accurate, affordable, easy to use systems.

As a valued customer of CONTROLS, you will receive continuous, expert support and advice for your equipment. Furthermore, we can offer full installation and training in the correct operation of your CONTROLS equipment.

For support from our expert Customer Care Team, contact your local CONTROLS office / distributor or email customercare@controls-group.com.

For more information, please visit www.controls-group.com.

CONTROLS

Italy (HEAD OFFICE)

t +39 02 92184 1

f +39 02 92103 333

e sales@controls-group.com

www.controls-group.com

France

info-fr@controls-group.com

Mexico

info-mx@controls-group.com

Poland

info-pl@controls-group.com

UK

info-uk@controls-group.com

USA

info-usa@controls-group.com